



# Quality Modeller

## KEY BENEFITS

Your business hinges on its ability to deliver better software faster than anyone else. With Quality Modeller, you can:

### DELIVER QUALITY SOFTWARE, FASTER



Avoid costly re-development and automate away bottlenecks in test case design, automation, test maintenance and data.

### ENSURE SEAMLESS CROSS-TEAM COLLABORATION



Provide collaborative models for parallel teams to work from, avoiding bugs and delays caused by miscommunications and silos.

### MAXIMISE EFFICIENCY AND AVOID WASTED LABOUR



Make every created artifact reusable, while automating time lost creating repetitive tests, scripts and user stories.

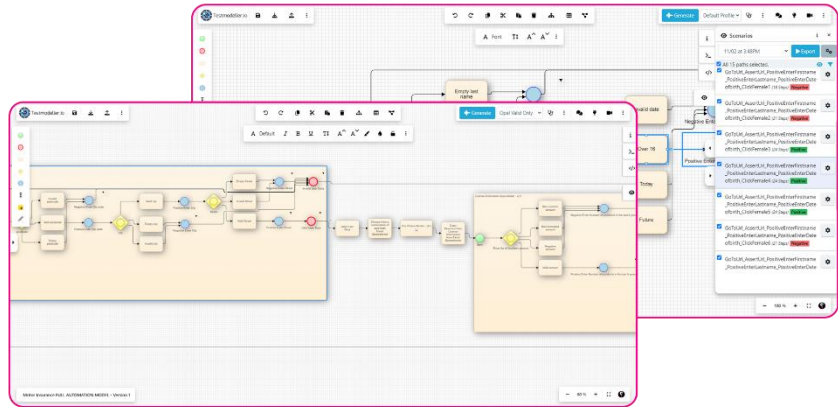
### REDUCE BUGS AND DEFECT REMEDIATION COSTS



Find more bugs, earlier and at less cost to fix, from design all the way through to optimised testing.

Equip engineers with the requirements they need to develop bugless code, with optimised tests ready within seconds of each check-in.

Quality Modeller is a collaborative requirements modelling and test generation engine that eradicates bugs and bottlenecks in software design, development and testing.



Cross-functional teams can use Quality Modeller's extensive importers and accelerators to build flowcharts of their systems under test, pooling data from user stories, tests, UI scans and beyond. The clear flows communicate requirements accurately to developers, avoiding design defects and the costly rework they create.

## CUSTOMER SUCCESS



**EVERFI – 30,000X FASTER TEST CREATION AFTER JUST 9 MONTHS**

Moved from 1+ months to create automated tests, to generating functional, visual and accessibility tests within seconds of a code-check-in.



**THINKDONATE – A 25X REDUCTION IN API TEST VOLUME**

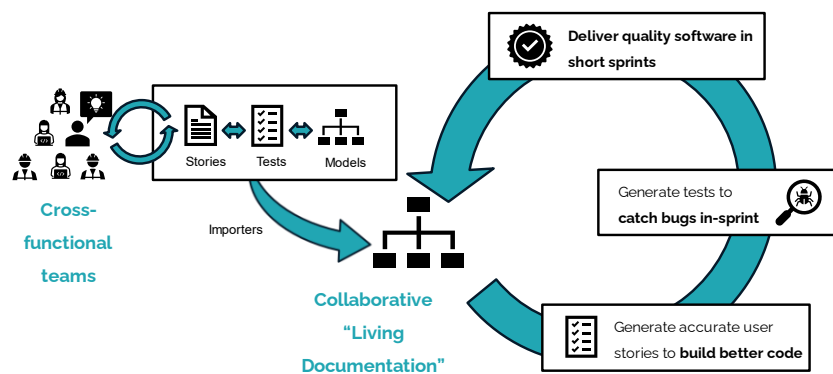
Generated optimised API tests for a REST Assured framework, with product owners using test results to formulate accurate API specifications.

**A \$300M TELCO – 50% BETTER COVERAGE, 4X FASTER TEST DESIGN, 15X FASTER SCRIPT GENERATION**

Testers and Bas collaboratively generated Jira/X-Ray tests and automated UI tests directly from requirements created by BAs.

**A LARGE BANK – 25X FASTER SELENIUM TEST CREATION**

One tester generated 1000 automated tests in a single month. Previously, it took 10 testers 2 months to script 800 tests.



Quality Modeller's unambiguous flowcharts further generate targeted test cases, automated tests and data, overcoming system complexity and testing within seconds of a check-in. As changes occur from user stories to code, updating the central models identifies which DevOps artifacts need updating in-sprint, rapidly regenerating tests, user stories and data.

## KEY DIFFERENTIATORS

**SHORTEN TIME-TO-VALUE** - We strive continuously to add new accelerators, shorten adoption, and make our test generation the fastest in the world.

**A PARTNERSHIP WITH WORLD-LEADING EXPERTS** - Our team of experts are pioneers in test and data generation. They will partner with you to solve the hardest challenges in your software delivery.

**TOOL AND SYSTEM AGNOSTIC** - “Future proof” your development and generate tests for mobile, web, API, mainframe and beyond!

**NOT “ANOTHER TESTING TOOL”** - Quality Modeller is your platform to Continuous Quality, used collaboratively to design better user stories, write better code, and create better tests.

**AN OPEN TECHNOLOGY** - Avoid vendor lock and “rip and replace”, pushing optimised artifacts to the tools that work for you.

**SEAMLESSLY INTEGRATED TEST DATA** - Solve one of the biggest bottlenecks in testing and development, making complete and compliant data available to teams and tests on-the-fly.

**MEASURABLE AND MEANINGFUL TEST COVERAGE** - Don't just create more tests – generate the smallest test set that will deliver the most value in-sprint.

**EASY AND CONFIGURABLE AUTOMATION** - Rapidly generate automated tests from intuitive models, while retaining the full flexibility of code.

**MAXIMISE REUSABILITY** - Every model, story, and test becomes a reusable asset, accelerating delivery sprint-over-sprint.

## GET STARTED

[START YOUR FREE TRIAL](#) [BOOK A PERSONAL DEMO](#)

## WHY CURIOSITY

We are pioneers in test, data and user story generation. In 1995, members of our team co-founded the first of four start-ups specializing in requirements modelling, test generation, and enterprise test data. Most of our team have worked together at one or more of the innovative start-ups in this rich history, developing leading technologies in the history of test data management and model-based testing. Some of these tools remain on the market today, having been acquired by other vendors.

Curiosity offers a rare combination of project experience, cutting-edge software, and a history of innovation. We further bring an ethos of *partnering* with customers, working collaboratively to solve their hardest problems in testing and development. In Curiosity, you will be partnering with veteran software inventors, who will support you as you bring about meaningful changes in mindset, approaches and technology. Neither you nor your software will be left “on the shelf”.

## KEY FEATURES

### AGILE REQUIREMENTS MODELLING

Quickly visualise complex system logic in clear and complete flowcharts, used to drive rapid development and in-sprint testing.

### TEST AUTOMATION CREATION

Generate tests for web, mobile, APIs and back-ends, all while retaining the full flexibility of code to test your complex system logic.

### OPTIMISED TEST CASE GENERATION

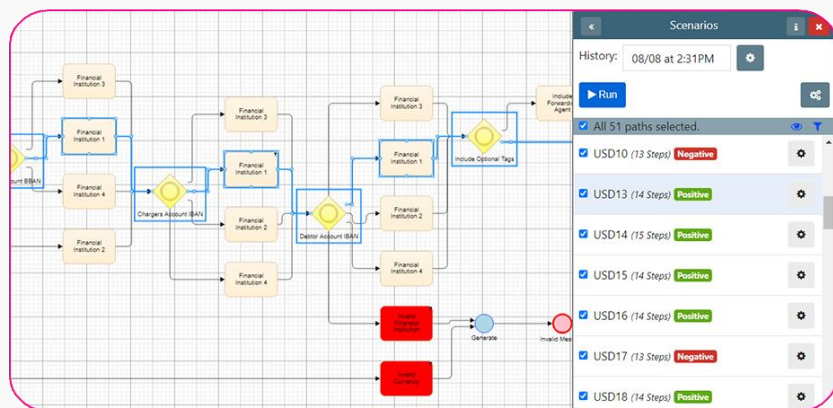
Create the smallest set of tests needed to “cover” all your system logic, or target testing dynamically based on time and risk.

### JUST IN TIME TEST DATA

Use 500+ functions to generate data as tests are created, or use integrated Enterprise Test Data to find, mask, make and allocate data on-the-fly.

### SDLC TRACEABILITY AND IN-SPRINT MAINTENANCE

Export and link user stories, test cases, data and automated tests, regenerating them as changes occur from requirements through to code.



## INTEGRATIONS AND EXTENSIBILITY

Quality Modeller is an open technology that works as an accelerator to your tools and processes. With hundreds of out-of-the-box connectors and an Open API, you can avoid vendor lock and wasteful “rip and replace”. Quality Modeller plugs into best-of-breed tools across:

- Requirements Engineering
- Device Labs and Environments
- CD/CD
- Test Case Management
- Code Repositories
- Test Automation